

Datalogger

Quick Installation Guide



Slenergy Technology (A.H.) Co., Ltd.



Note

- Wireless Connectivity: Wi-Fi IEEE 802.11 a/b/g/n 2.4 GHz/Bluetooth 5.0
- Wi-Fi Maximum Output Power: 2400-2483.5 MHz, <20 dBm
- Bluetooth Maximum Output Power: 2402-2480 MHz, <20dBm
- Please read this manual carefully before using the product, and keep it in a place accessible to the operation and maintenance personnel.
- The contents of this manual may be updated from time to time due to product upgrade or other reasons. Please refer to the actual product purchased, and the latest version of the manual can be downloaded through the official website or sales channels. Unless otherwise agreed, this manual only serves as an user guide, and all representations, information and recommendations included do not constitute any express or implied warranty.
- Without a written permission of the Company, no unit or individual is allowed to extract and copy any part or all of the content of this manual without authorization, and it is not allowed to disseminate in any form.
- Slenergy Technology (A.H.) Co., Ltd. hereby declares that the Datalogger is in compliance with Directive 2014/53/EU.

All information in this document is subject to copyright and other intellectual property rights of Slenergy Technology (A.H.) Co., Ltd. and its licensors. This material may not be modified, reproduced or copied, in whole or in part, without the prior written permission of Slenergy Technology (A.H.) Co., Ltd. and its licensors. Additional information is available upon request.

Product Model Code



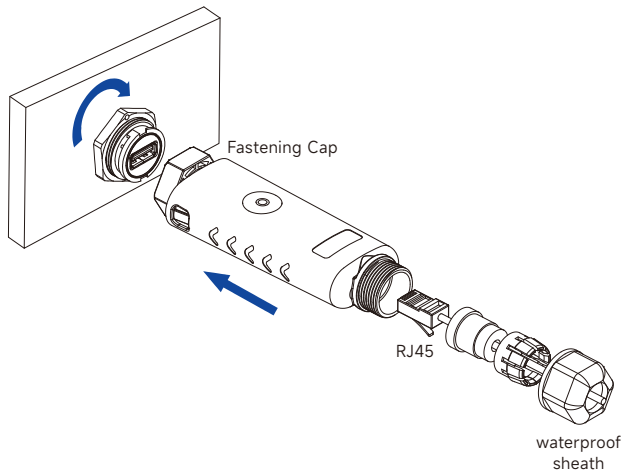
: Global servers
 : European servers

SL	Indicates Slenergy Technology	011	Indicates LAN&WiFi-USB
C	Indicates communicate	012	Indicates LAN&WiFi-485
R	Indicates residential		

Datalogger Installation

If using Ethernet, please refer to the following installation steps:

- Step 1:** Thread the network cable through the waterproof sheath.
 - Step 2:** Connect one side of the network cable to the RJ45 port of the Datalogger, and the other side to the LAN port of the router.
 - Step 3:** Tighten the waterproof sheath.
- The Datalogger and inverter are connected and fixed through USB interface. Please refer to the following installation steps:
- Step 4:** Insert the Datalogger along the joint guide slot.
 - Step 5:** Tighten fastening cap clockwise.



Datalogger Status Confirmation

Confirm the collector status by the LED indicator:

Lights	Status	Indication
	Steady Blue	Normal operation of Datalogger
	Blinking Blue at 0.2s intervals	Abnormal communication of Datalogger and inverter
	Blinking Red at 0.2s intervals	Unavailable network or failed connection between Datalogger and router
	Blinking Red at 2s intervals	Failed connection between Datalogger and server
	Steady Red	Datalogger fault
	Blinking Green at 0.2s intervals	Software and firmware upgrade of Datalogger
	Off	Power cutoff
		Datalogger power failure or damage

Abnormal Status and Handling

If there are abnormal platform data when the collector is on, debug first according to the LED indicator status. If it still does not work, please contact the after-sales service.



Please ensure that the collector works normally before leaving the site. If there is any abnormality, do not leave the site and contact the customer service in time.
Customer Service Hotline: 400-826-5788



Tips: Precautions for the Installation of Datalogger
Please Plug and Unplug the Datalogger after Power Off.

In case of any technical questions about the product, please contact us with the following information:

- Model and serial number of the Datalogger;
 - Model and serial number of the connected inverter;
- Thank you for your support.

Downloading of Monitoring Platform

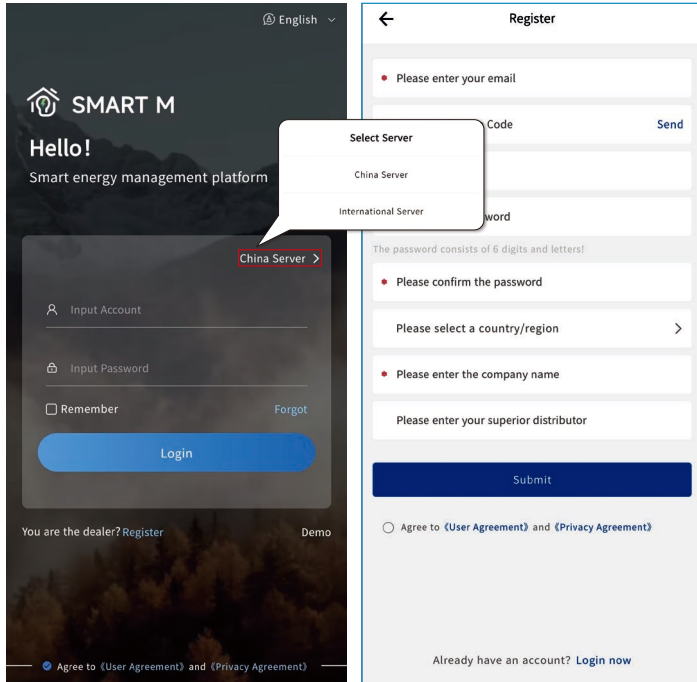
- If you are a residential user of photovoltaic power station, it is recommended to use the APP Smart M. You can download the APP by scanning the following QR code with mobile phone, or searching for "Smart M" in the App Store (Android or iPhone).
- You can also go to <https://global.slenergytech.com> to log in to search data.



How to Use Smart M

1.Account Registration

Open the app, switch the server to an international server, click the registration button to create an account, and follow the following steps to complete the registration.



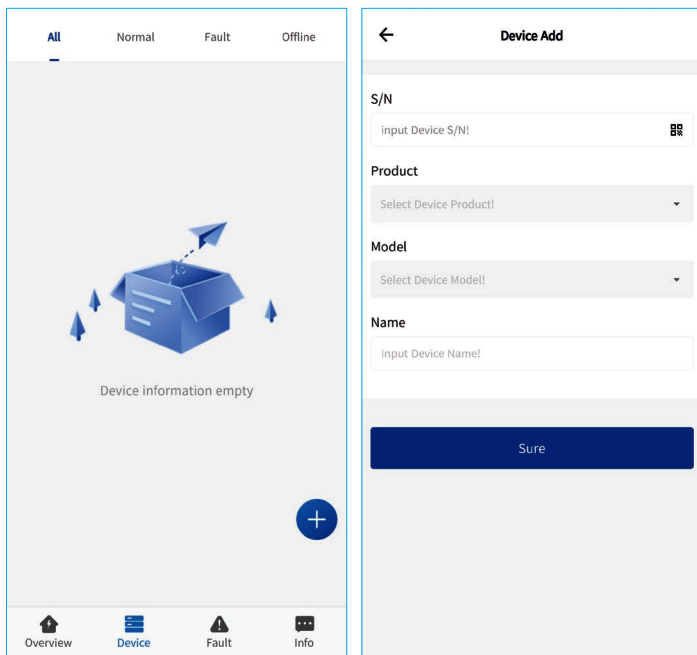
Login Page

Registration Page

3.Devices Addition (Collector and Inverter)

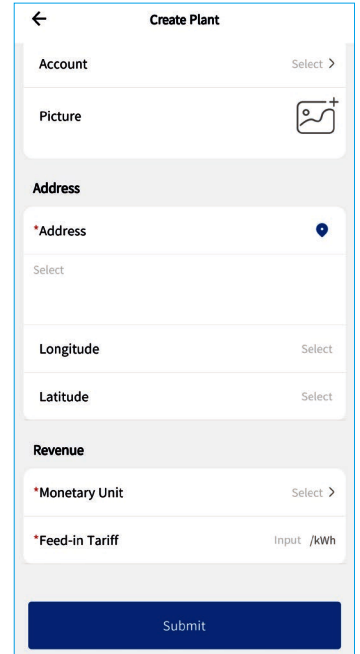
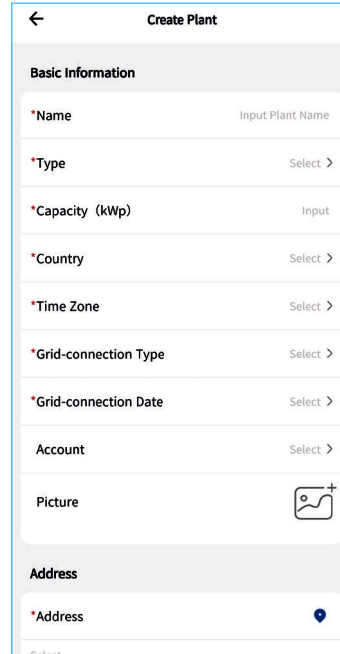
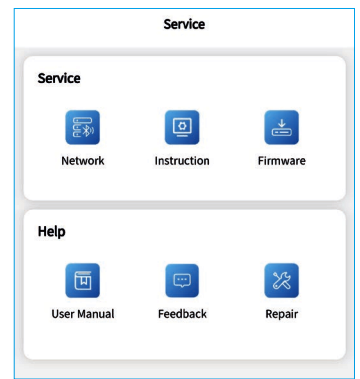
Click the list and find the newly-created power station, enter and click "Device", select "Collector", click "+", enter the SN number or scan the QR code, select the product, device model, device name and other information, and finally click "OK".

Select "Inverter", click "+", manually enter the SN number or scan the QR code, select the product, device model, device name and other information, and finally click "OK".



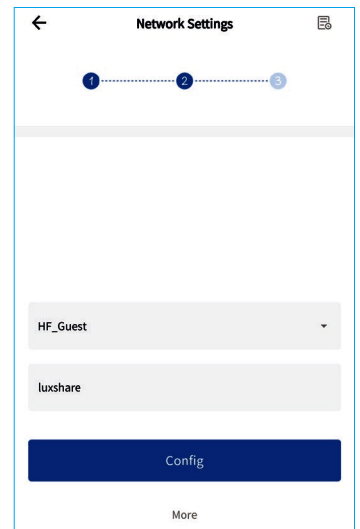
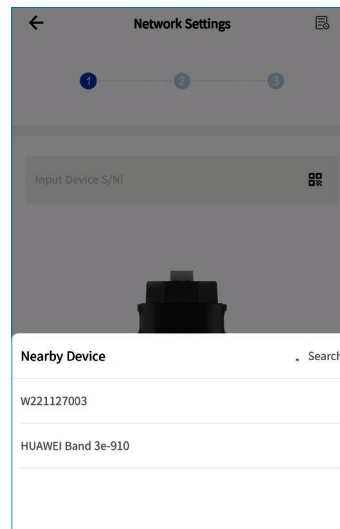
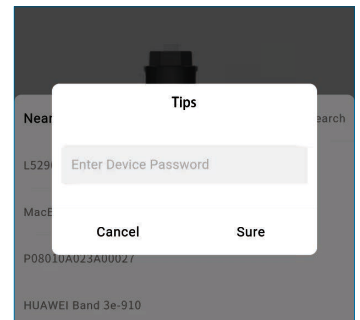
2.Power Station Creation

Click "List" and then "+" to enter the power station creation page, and fill in the basic information, after which, click "Submit".



4.Network Configuration

- The network of 4G Datalogger is configured automatically, with no manual setting required;
- Click "Tools" to configure the network. Enter the operation password, default password: **smart123**. Please keep the WiFi and Bluetooth of your mobile on. The steps are as follows:



After the network configuration is completed, you can return to view the operation data of the created power station.